

# OPERATING INSTRUCTIONS

**ADE**

## Plate Tower Systems



PM-Z



PM DUO



PM84STA

## Mobile Plate Tower Systems – PM-Z + PM84STA + PM-DUO Series

PM+PM DUO-210420-Rev005-UM-en



# 1 CONTENTS

1	CONTENTS.....	2
2	FOREWORD.....	3
3	START-UP.....	4
3.1	PM-Z Mobile Plate Trolleys.....	4
3.1.1	Assembling PM-Z Mobile Plate Trolleys.....	4
3.1.2	PM-Z Mobile Plate Trolleys Assembly Drawing (Here PM48Z).....	4
3.1.3	Folding Up Models PM-Z.....	4
3.2	PM Mobile Plate Trolleys.....	5
3.2.1	Assembling the PM84STA Mobile Plate Trolley.....	5
3.2.2	PM84STA Mobile Plate Trolley Assembly Drawing.....	5
3.3	PM-DUO Mobile Plate Trolleys.....	6
3.3.1	Assembling PM-DUO Mobile Plate Trolleys.....	6
3.3.2	PM-DUO Mobile Plate Trolleys Assembly Drawing.....	6
3.4	Adjusting the Plate Holders to Different Plate Sizes.....	7
3.5	Using Protective or Thermal Covers (Optional).....	7
3.6	Converting into the Tray Trolley (Optional).....	7
4	CLEANING AND CARE.....	7
5	TECHNICAL DATA.....	8
6	EXPLODED VIEWS.....	9
6.1	Column for All PM Models.....	9
6.2	Column Spare Parts List.....	9
6.3	PM-Z Exploded View.....	10
6.4	PM-Z Spare Parts List.....	10
6.5	PM84STA Exploded View.....	11
6.6	PM84STA Spare Parts List.....	11
6.7	PM-DUO Exploded View.....	12
6.8	PM-DUO Spare Parts List.....	12

## 2 FOREWORD



This symbol means: “Observe operating instructions.” For accurate results, read these operating instructions carefully and observe the information contained therein. Keep these operating instructions handy for future reference.

The PM series mobile plate trolleys offer flexibility, versatility, and reliability and have been specially developed for all types of commercial kitchens where food is prepared and served for many people. Plates ready for serving and those arranged for preparation take up a lot of space in the kitchen or cold room. The mobile plate trolleys enable efficient use of the available workspace. The PM series allows stacking a maximum of 84 plates of any size within a minimal space without disturbing the arrangement of dishes on the plates. Plates with dishes ready for serving can then be transported to wherever they are needed. The PM series can accommodate all kinds of plates: large and small, thick and thin, even bowls with a rim up to 5 cm high. It does not matter whether they are round, oval, or square.

The adaptation requires no special tools; simply set the adjusting screw by hand. Using the various serving tray supports, you can quickly and easily transform your plate trolley into a tray trolley for up to 20 trays measuring 600 x 400 mm or larger. It can be used to place dishes, coffee cups, or cakes, to name a few.

The requirements vary depending on the application or kitchen. Hence, the PM series offers space for 48 to 84 plates in various sizes, while the Duo series mobile plate trolley with two columns can accommodate 96 to 168 plates.

The PM series mobile plate trolleys are fitted with four casters, two of which have brakes, for easy movement.

The PM-Z series mobile plate trolleys can also be easily folded up to save space when not in use.

The frame is made of stainless steel, and the columns are made of aluminum and plastic.

Various PM series models can be supplied with protective and thermal covers available as an option. Each of the four corners of the cover has its own zipper, enabling easy and convenient access from all sides.

Protective covers prevent the stacked food from drying out quickly and contain odors released by the food.

Protective covers are available for models PM84STA, PM48Z, PM60Z, and PM84Z, as well as for the Duo series mobile plate trolleys, such as PM96DUO, PM120DUO, and PM168DUO.

Thermal covers have been specially designed for the PM series to keep cold dishes such as fish, salads, or desserts cool. For the best experience, remove the thermal cover from your PM trolley right before serving.

With the help of the thermal covers, cool temperatures between 4 and 6.5 °C (at an ambient temperature of 20 °C) can be kept for up to two hours.

Warm dishes can be kept warm for 15 to 20 minutes using the thermal cover.

Thermal covers are available for models PM84STA, PM60Z, and PM84Z.

Optional serving tray supports are only available for model PM84STA. Using these supports, you can quickly and easily transform your plate trolley into a tray trolley.

Alternatively, the plate towers are also available as wall-mounted plate towers (WM series) and tabletop plate towers (TM series) of various sizes.

## 3 START-UP

### 3.1 PM-Z Mobile Plate Trolleys

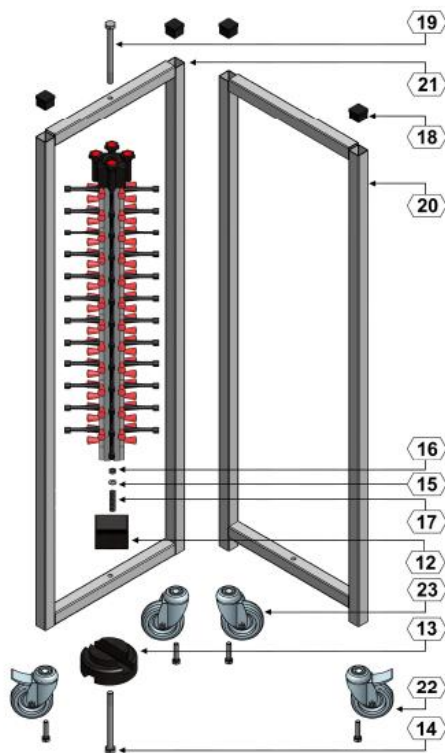
The mobile plate trolleys come in different sizes to accommodate varying plate numbers: PM48Z for up to 48 plates, PM60Z for up to 60 plates, and PM84Z for up to 84 plates.

#### 3.1.1 Assembling PM-Z Mobile Plate Trolleys

Take the column (C48, C60, or C84, depending on the size) and the frame parts (inner frame 20 and outer frame 21) out of the box. Fit the column into the base of the frame (13). The base is ready assembled.

Push the centering pin (19) up slightly until the column fits underneath, and then insert the pin into the column head.

#### 3.1.2 PM-Z Mobile Plate Trolleys Assembly Drawing (Here PM48Z)



#### 3.1.3 Folding Up Models PM-Z

Pull up the inner frame, which is slightly shorter than the outer frame, and then fold both frames together. This is best done by pressing both frames together with both hands at the top in the middle (at the cross joint), using the base of the frame to help a little. It may seem somewhat tedious at first because everything is still new. But you will get used to it over time and find it easy.

## **3.2 PM Mobile Plate Trolleys**

The PM84STA mobile plate trolley has a rigid frame and can accommodate up to 84 plates.

### **3.2.1 Assembling the PM84STA Mobile Plate Trolley**

Carefully remove the base frame (48) from the box.

Check whether the casters (normally supplied disassembled) are fitted, and if not, fit them with the M8 self-locking nuts and then place the base frame with the casters fitted on the floor.

Remove the other parts from the box.

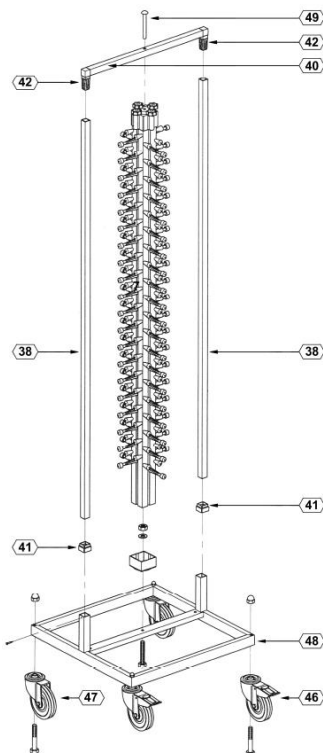
Place the side stands (38) between the two lateral supports by pushing them into the tubes and tapping them lightly with a rubber mallet. In doing so, use the connecting caps (41).

Using the M10 connecting screw, fit the mounting block to the base frame and secure it with the M10 self-locking nut.

Next, attach the plastic corner connectors (42) to the RVS connector (40).

After that, fit the base of the column into the mounting block and insert both corner connectors of the RVS connector into the two side stands so that the column can be secured using the centering bolt (49).

### **3.2.2 PM84STA Mobile Plate Trolley Assembly Drawing**



### 3.3 PM-DUO Mobile Plate Trolleys

The Duo series mobile plate trolleys are each equipped with two columns. They come in different sizes to accommodate varying plate numbers: PM96DUO for up to 96 plates, PM120DUO for up to 120 plates, and PM168DUO for up to 168 plates.

#### 3.3.1 Assembling PM-DUO Mobile Plate Trolleys

Carefully remove the base frame (45) from the box.

Check whether the casters (normally supplied disassembled) are fitted, and if not, fit them with the M8 self-locking nuts and then place the base frame with the casters fitted on the floor.

Remove the other parts from the box.

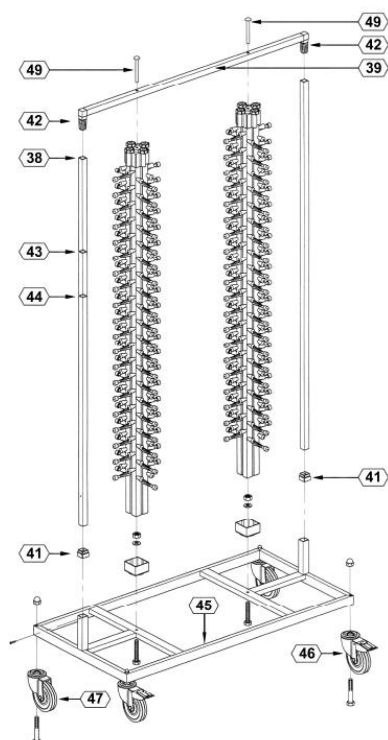
Place the side stands (38, 43, or 44, depending on the model) between the two lateral supports by pushing them into the tubes and tapping them lightly with a rubber mallet. In doing so, use the connecting caps (41).

Using the M10 connecting screws, fit the mounting blocks to the base frame and secure them with the M10 self-locking nuts.

Next, attach the plastic corner connectors (42) to the RVS connector (39).

After that, fit the bases of the columns into the mounting blocks and insert both corner connectors of the RVS connector into the two side stands so that the columns can be secured using the centering bolts (49).

#### 3.3.2 PM-DUO Mobile Plate Trolleys Assembly Drawing



### **3.4 Adjusting the Plate Holders to Different Plate Sizes**

Each of the four column sides can individually be adjusted to different plates of up to 33 cm in diameter and 5 cm in height.

Use the adjusting screws to change the height of the black plate holders.

Turning the adjusting screw to the right reduces the gap between the red and black plate holders, allowing shallower plates to be stacked.

Accordingly, you can stack taller plates by turning the adjusting screw to the left to increase the gap between the black and red plate holders.

### **3.5 Using Protective or Thermal Covers (Optional)**

The PM series mobile plate trolleys can be supplied with optional protective and thermal covers (see technical data for available versions).

When used with the PM-Z series, the cover is placed over the top of the cross of the frame. The cover should be positioned so that the four zippers run along the corners of the plate trolley.

When used with models PM84STA or PM-DUO, make sure you first place the frame attachment supplied with the protective or thermal cover on the RVS connector of the plate trolley. You should then place the cover over this frame attachment.

### **3.6 Converting into the Tray Trolley (Optional)**

Model PM84STA can be supplied with optional serving tray supports. Using this accessory, you can easily transform your plate trolley into a tray trolley to accommodate round, oval, or rectangular trays measuring 53 to 80 cm in width.

The serving tray supports are made up of two identical rods attached to the side stands of the frame.

Fit the screw pins on the lower edges of the serving tray supports into the small holes next to the side stands in the base frame on both sides. The screw pins are height adjustable to accommodate trays of various sizes.

On the top edge of the tray support is a clamping device with a locking screw. It can be used to fasten the tray support to the square frame.

Rotate the column of the PM84STA plate trolley so that the black plate holders are in the middle at the front. You may also need to rotate the column by another 90 degrees so that the red plate holders are slightly higher than the tray supports.

Using the adjusting screws, align the column so that the trays easily fit inside.

Make sure you always stack the trays from bottom to top and from both sides to ensure optimum stability.

## **4 CLEANING AND CARE**

The PM series mobile plate trolleys require no user maintenance.

The mobile plate trolleys must be cleaned regularly with warm water and commercially available cleaning agents. High-pressure cleaning is allowed.

The column can be easily dismantled by removing the centering bolt. This is only necessary for cleaning or changing spare parts.

Should you have any problems or require spare parts for your mobile plate trolley, contact our customer service department.

## 5 TECHNICAL DATA

<b>Model</b>	<b>PM84Z</b>	<b>PM60Z</b>	<b>PM48Z</b>
Plates	84	60	48
Plate diameter/height	330 mm/50 mm	330 mm/50 mm	330 mm/50 mm
Characteristic	collapsible	collapsible	collapsible
Height	1890 mm	1490 mm	1270 mm
Footprint	650 x 650 mm	650 x 650 mm	650 x 650 mm
Net/gross weight	20 kg/22 kg	15 kg/19 kg	14 kg/17 kg
Package dimensions, frame	700 x 100 x 1900 mm	700 x 100 x 1500 mm	700 x 100 x 1280 mm
Package dimensions, column	190 x 190 x 1750 mm	190 x 190 x 1470 mm	190 x 190 x 1270 mm

<b>Model</b>	<b>PM84STA</b>
Plates	84
Plate diameter/height	330 mm/50 mm
Characteristic	with rigid frame
Height	1820 mm
Footprint	600 x 600 mm
Net/gross weight	28 kg/30 kg
Package dimensions, frame	600 x 600 x 1900 mm
Package dimensions, column	190 x 190 x 1750 mm

<b>Model</b>	<b>PM168DUO</b>	<b>PM120DUO</b>	<b>PM96DUO</b>
Plates	168	120	96
Plate diameter/height	330 mm/50 mm	330 mm/50 mm	330 mm/50 mm
Characteristic	with rigid frame	with rigid frame	with rigid frame
Height	1860 mm	1580 mm	1380 mm
Footprint	1200 x 600 mm	1200 x 600 mm	1200 x 600 mm
Net/gross weight	31.6 kg/34 kg	26 kg/28 kg	24 kg/26 kg
Package dimensions, frame	600 x 1210 x 190 mm	600 x 1210 x 190 mm	600 x 1210 x 190 mm
Package dimensions, Columns	2x 190 x 190 x 1750 mm	2x 190 x 190 x 1470 mm	2x 190 x 190 x 1270 mm

Optional:

<b>Protective Covers</b>	<b>Model</b>	<b>Item no.</b>	<b>Designation</b>
	PM84STA	Z4631	BH84STA
	PM48Z	Z4644	BH48Z
	PM60Z	Z4643	BH60Z
	PM84Z	Z4642	BH84Z
	PM96DUO	Z4634	BH96DUO
	PM120DUO	Z4645	BH120DUO
	PM168DUO	Z4646	BH168DUO

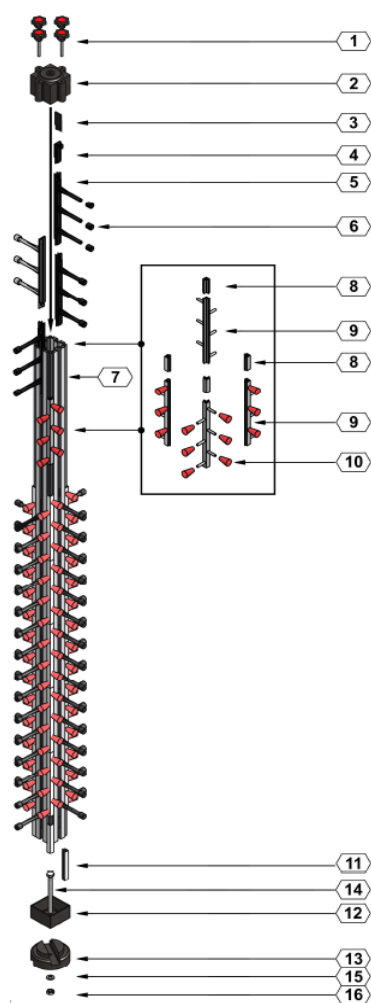
<b>Thermal Covers</b>	<b>Model</b>	<b>Item no.</b>	<b>Designation</b>
	PM84STA	Z4648	TH84STA
	PM60Z	Z4650	TH60Z
	PM84Z	Z4627	TH84Z

<b>Serving Tray Supports</b>	<b>Model</b>	<b>Item no.</b>	<b>Designation</b>
	PM84STA	Z4630	DBS



## 6 EXPLODED VIEWS

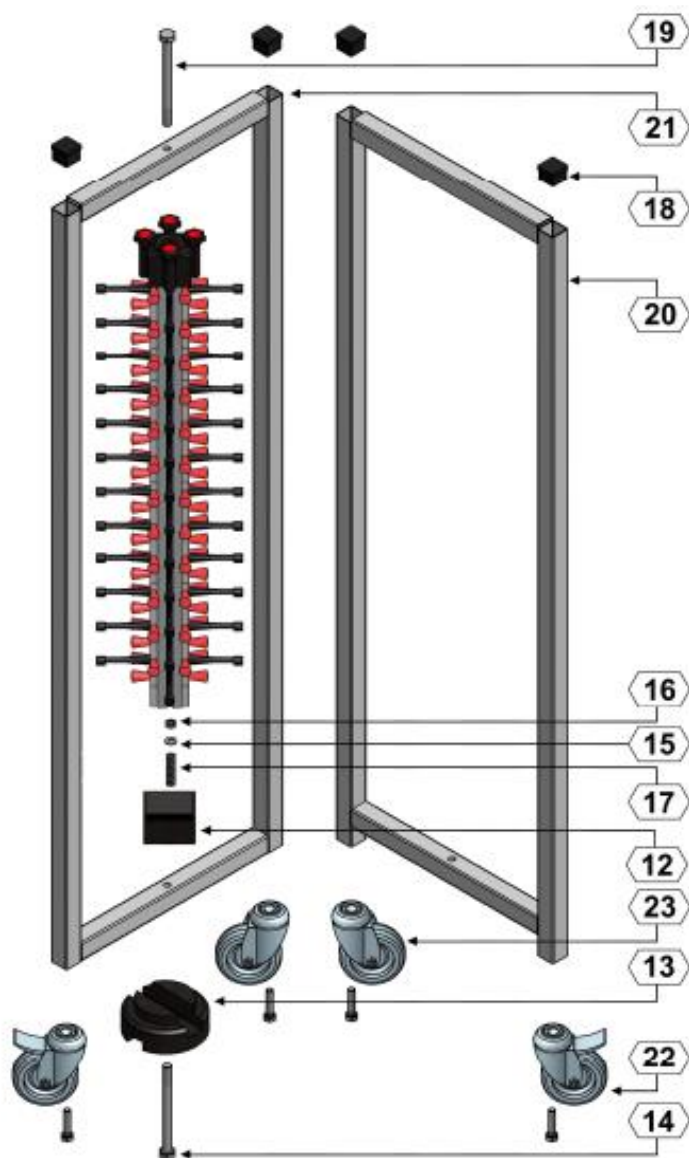
### 6.1 Column for All PM Models



### 6.2 Column Spare Parts List

Position	Designation	Item no.
1	Adjusting screw M6x60	H4630-008
2	Top cap	H4630-003
3	Extension	H4630-007
4	Pulley	H4630-006
5	Support set, three fingers	H4630-004
6	Rubber cap, black	H4630-002
7	Main column guide, aluminum	
8	Corner extension, gray, 44 mm	
9a	Corner support, gray, right (marked R)	H4630-013
9b	Corner support, gray, left (marked L)	H4630-0131
10	Rubber cap, red	H4630-009
11	Corner extension, gray, 95 mm	
12	Plastic base for column, 10 mm hole	H4630-005
13	Nylon mounting block	H4630-018
14	Connecting screw M10x40 mm	
15	Washer 30x10 mm	
16	Self-locking nut M10	
14+15+16	Clamping screw	H4630-029

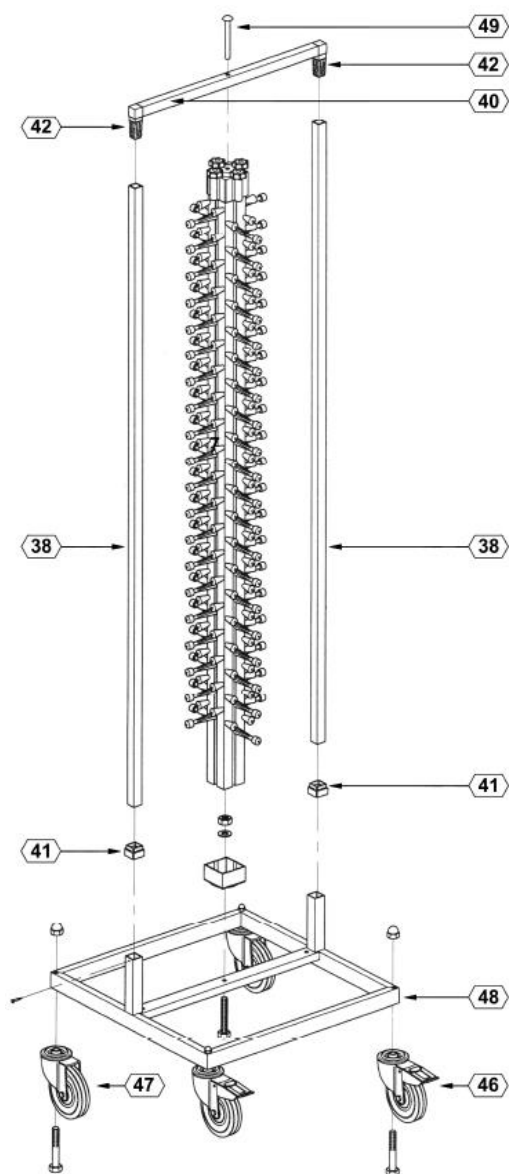
### 6.3 PM-Z Exploded View



### 6.4 PM-Z Spare Parts List

Position	Designation	Item no.
C84	Aluminum column PM84, 1608 mm long	
C60	Aluminum column PM60, 1188 mm long	
C48	Aluminum column PM48, 985 mm long	
13	Nylon mounting block	H4630-018
17	Base compression spring set/clamping screw	H4630-029
18	End caps	H4630-019
19	Centering pin M10x120	H4630-012
20	RVS inner frame – tube 25 x 25 x 1.2 mm	
21	RVS outer frame – tube 25 x 25 x 1.2 mm	
22	Caster 100 mm with brake	H4630-0151
23	Caster 100 mm without brake	H4630-015

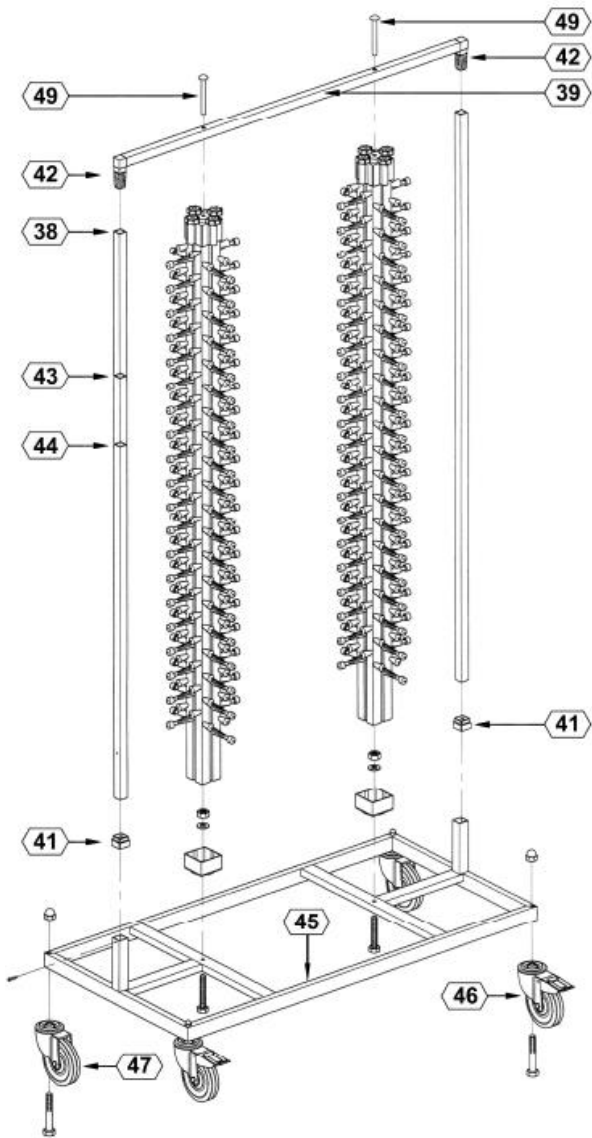
## 6.5 PM84STA Exploded View



## 6.6 PM84STA Spare Parts List

Position	Designation	Item no.
C84	Aluminum column PM84, 1608 mm long	
38	RVS side stand for column 84	
40	RVS connector PM84STA	
41	Connecting caps	
42	Plastic corner connectors	H4630-021
46	Caster 125 mm with brake	H4630-0141
47	Caster 125 mm without brake	H4630-014
48	Base frame PM84STA	
49	Centering bolt M10x70 mm	

## 6.7 PM-DUO Exploded View



## 6.8 PM-DUO Spare Parts List

Position	Designation	Item no.
C84	Aluminum column PM84, 1608 mm long	
C60	Aluminum column PM60, 1188 mm long	
C48	Aluminum column PM48, 985 mm long	
38	RVS side stand for column 84	
39	RVS connector PM-DUO	
41	Connecting caps	
42	Plastic corner connectors	
43	RVS side stand for column 60	
44	RVS side stand for column 48	
45	Base frame PM-DUO	
46	Caster 125 mm with brake	H4630-0141
47	Caster 125 mm without brake	H4630-014
49	Centering bolt M10x70 mm	







**Distributor:**

**Manufacturer:**

ADE Germany GmbH  
Neuer Höltigbaum 15  
22143 Hamburg



+49 40 432 776 - 0



+49 40 432 776 - 10



info@ade-germany.de



www.ade-germany.de