

OPERATING MANUAL



Electronic wall scales



TerrexN wall scale

TerrexN-210324-Rev004-UM-e



1 Table of Contents

1	Table of Contents	2
2	Intended use.....	3
3	Safety instructions	3
4	Scope of delivery	4
5	Overview	5
6	Assembly / installation	5
6.1.	Assembly / installation of the wall scale	5
6.2.	Installation and connection of the display device	7
6.3.	Commissioning of the weighing system	7
7	Care and maintenance	8
7.1.	Cleaning	8
7.2.	Faults and error messages	8
7.3.	Storage and Transport Conditions	8
7.4.	Disposal.....	8
7.5.	Warranty.....	9
8	Technical data	9
9	Technical drawings	10
9.1.	Overview display	10
9.2.	Exploded views.....	11
9.3.	Parts list.....	14
10	Declaration of Conformity	15
11	Contact information of the manufacturer	15

2 Intended use



This symbol means: "Consult operating instructions". To achieve accurate results, read the instructions for use carefully before use and follow all instructions provided therein. Keep the instructions for use for future reference.

Your ADE wall scale is a quality product and is intended for determining the weight of meat products in slaughterhouses and butchers' shops.

The scale may be loaded with the maximum weight (Max) specified on the nameplate. To obtain accurate results, please read the installation and operating manual carefully and comply with the instructions contained therein. The scale may only be operated and maintained by trained personnel.

The weighing system may only be used for legal-for-trade weighing if it is calibrated. Please observe the specifications in the operating instructions for the display device.

The device may only be used as intended. All applications of the device not mentioned in the chapter "Intended use" are considered as improper use. It is the user of the device, but not the manufacturer, who assumes liability for any resulting damage to property or personal injury resulting from misuse.

The use of accessories other than the original accessories supplied by the manufacturer may void this warranty.



This device may not be modified without the manufacturer's permission.

3 Safety instructions

It is essential that you read, understand and follow all instructions in these instructions for use and others that accompany the system and its components as well as the country-specific installation standards, the applicable safety regulations and accident prevention regulations.

- Handle the scale with care and always keep in mind that it is a precision measuring instrument.
- The scale may only be operated and maintained by trained and authorised skilled personnel. Handling errors can lead to injuries or damage the weighing system.
- Before commissioning, make sure that the mains voltage and type of current specified on the nameplate of the connected display device match the mains voltage and type of current at the place of use.
- Lay the cables so that they cannot lead to a trip hazard.
- Lay the cables so that they cannot pose a risk of strangulation.
- Operate the device only within the permissible ambient conditions.
- Do not expose the scale to high temperatures, whether from neighbouring devices or direct sunlight.
- Use the scale at constant ambient temperatures and avoid using in draughts, otherwise the measurement results could be falsified.
- Place the scale as far as possible from other devices or sources that generate electromagnetic field or other interferences (e.g. strong motors and portable and mobile HF communication devices) as these can falsify the measurement results.
- Use only approved accessories and peripherals.
- Before cleaning the device, pull the mains adapter/plug out of the socket.

- Do not immerse the device in water or other liquids.
- If you have problems with this device, e.g. when setting up, maintaining or using, please contact the authorised customer service. Do not open or repair the device yourself.
- Please notify the authorised customer service if unexpected operations or events occur.

DO NOT use the scale:

- If the mains adapter is damaged;
- If the mains adapter is not working;
- If the battery compartment has an unnatural bulge;
- After long storage in a humid environment.

In such cases, please contact authorised customer support.

Please also observe the safety instructions in the operating instructions for the display device!

4 Scope of delivery

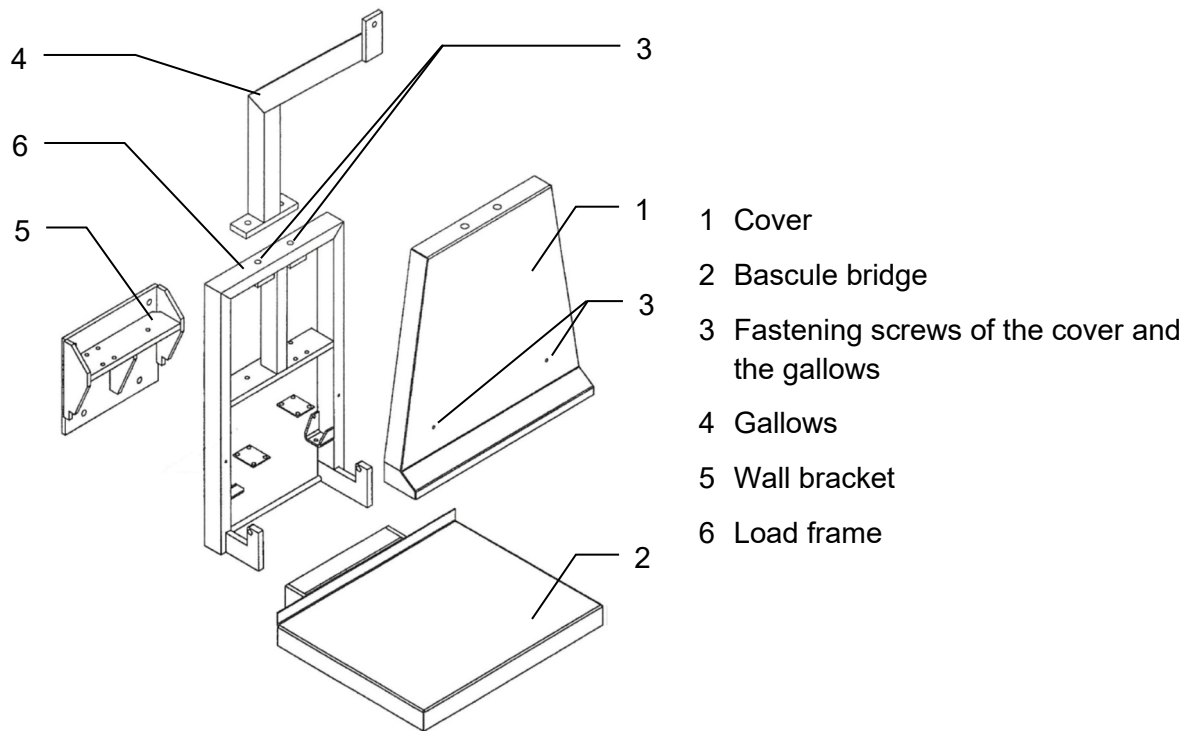
Check the delivery for completeness as soon as you receive the scale. Carefully unpack the scale and accessories and remove all packaging materials.

- TerrexN wall scale
- Wall bracket with mounting equipment
- Drilling template
- Operating instructions for wall scale
- Display device
- Operating instructions for the display device
- Other accessories, if necessary (if listed in the BA for display)
- Serial number-related declaration of conformity (only for calibrated scale)



The display is firmly connected to the scale with a connection cable. Make sure that the cable is not excessively kinked or squeezed, otherwise it will be damaged.

5 Overview



6 Assembly / installation

6.1. Assembly / installation of the wall scale



Make sure that the intended wall has sufficient load-bearing capacity.

Only use the fasteners suitable for the respective type of wall for mounting.

Make sure that no electricity, water or other supply lines run in the area of the boreholes.

Electrical devices are subject to special precautions regarding EMC and must be installed and operated according to these instructions.

1. Unpack the fasteners and drilling template (Fig. 1).

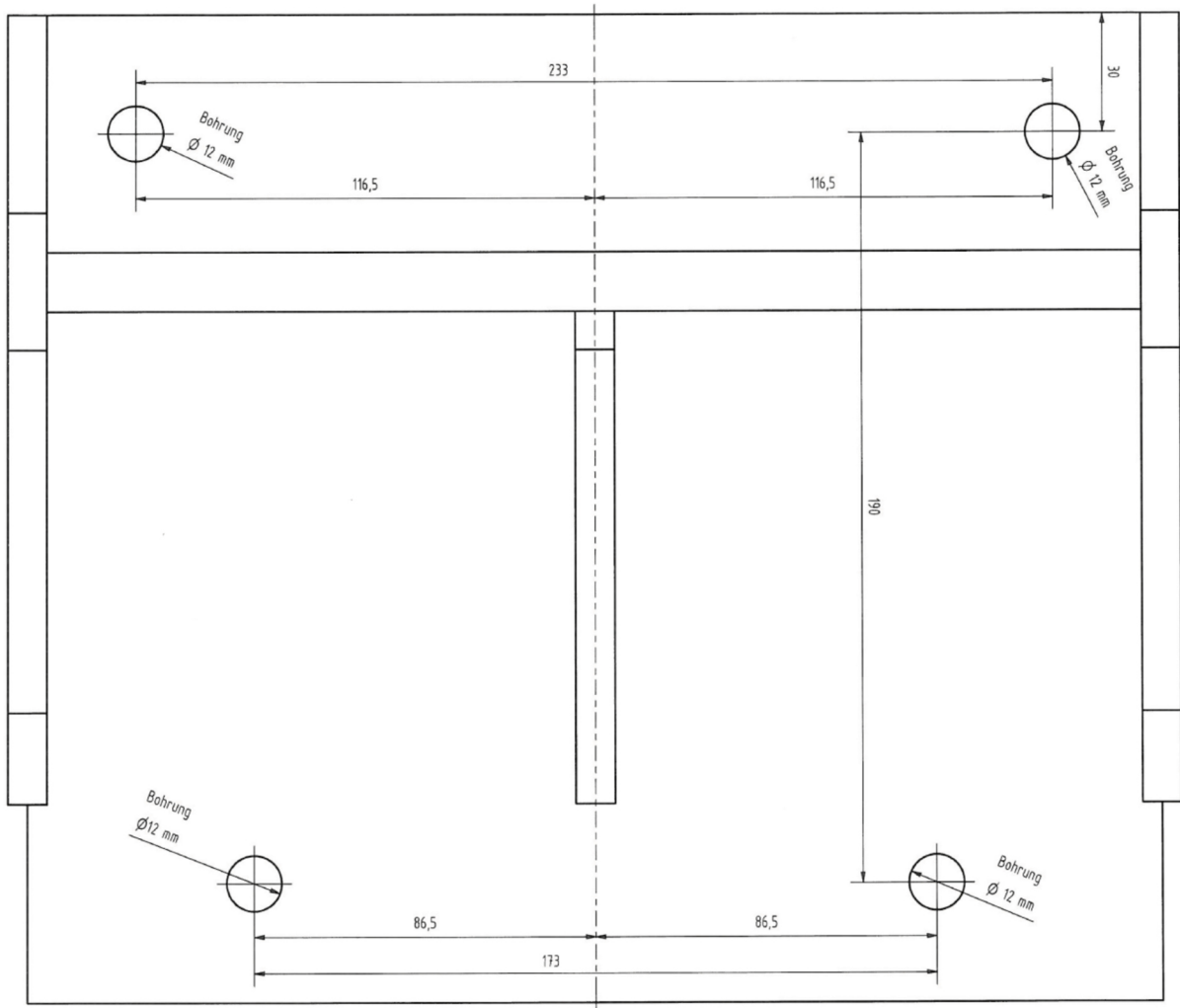


Figure 1

DE	EN
Bohrung	Hole
Ø 12 mm	Ø 12 mm
116,5	116.5
86,5	86.5

2. Examine the intended wall for sufficient load-bearing capacity.

Check whether the supplied fasteners are suitable for the masonry. Possibly use other fasteners. These include:

- Plastic dowels for concrete, aerated concrete, solid brick, vertically perforated brick;
- Through bolts with threaded rods for all other types of wall.
(Not included)

3. Determine the position of the scale, drill the fastening holes in the wall using the supplied drilling template (Fig. 1), observe the specified dimensions.

The distance to the floor as shown in Figures 2 - 4 must be observed.

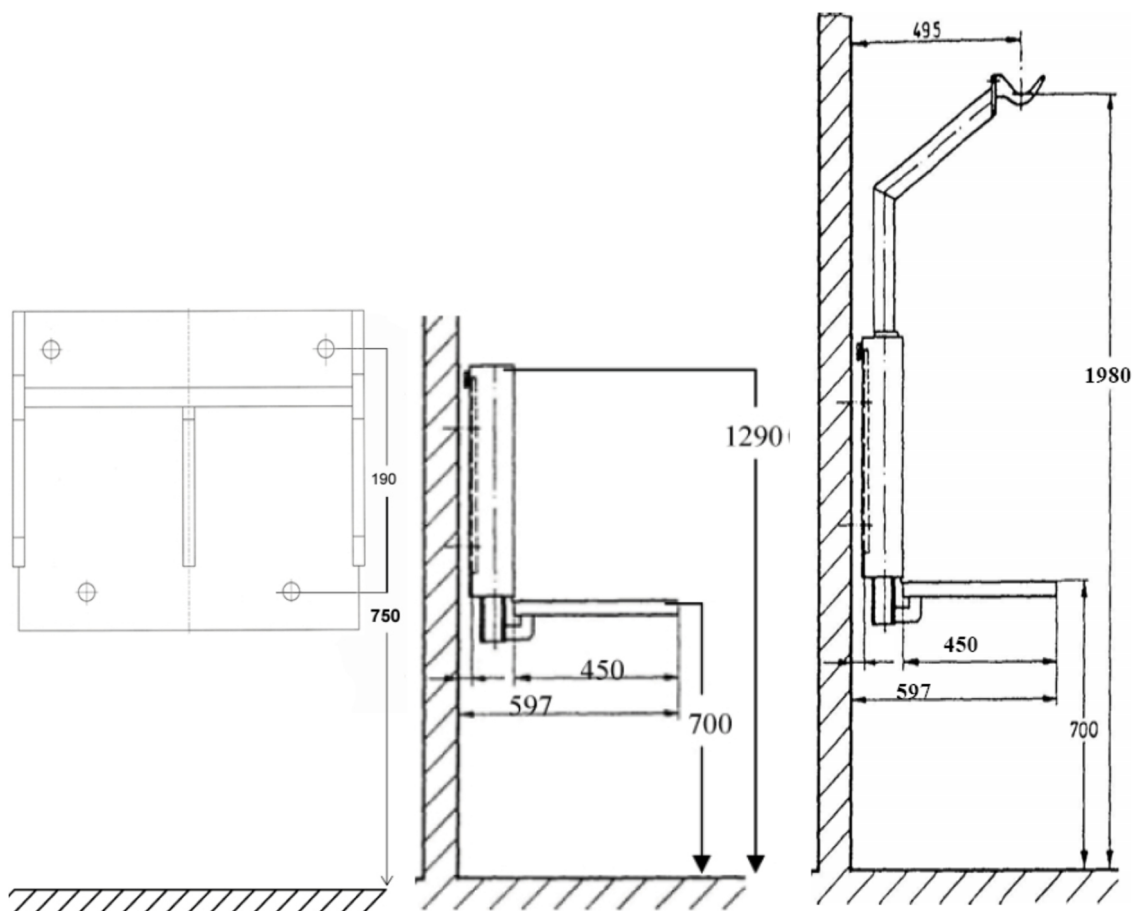


Figure 2

Figure 3

Figure 4

4. Anchor fasteners in the wall (dowels and hanger bolts).
5. Remove the scale from the box. Remove the cover (1). The cover is attached to the load frame (6) with 4 screws (3).
6. Attach the scale to the wall with the wall bracket (5) (Fig. 2).

Fold down the bascule bridge (2).

Align the scale vertically (plumb) or horizontally (alignment) with a spirit level. Use washers to compensate for the plumb/alignment.

6.2. Installation and connection of the display device

Please observe the specifications in the operating instructions for the display device.

6.3. Commissioning of the weighing system

Please observe the specifications in the operating instructions for the display device .

7 Care and maintenance

7.1. Cleaning



Before cleaning, disconnect the power supply.

Make sure that no liquid enters the device!

Please also observe the specifications in the operating instructions for the display device.

If necessary, clean the cover of the wall scale with a soft, slightly damp cloth.

Only clean all parts with suitable and approved cleaning agents. Only products with a pH of 7-8 may be used. Never use concentrated acids, alkalis, solvents or pure alcohol for cleaning.

7.2. Faults and error messages

Please observe the specifications in the operating instructions for the display device.

7.3. Storage and Transport Conditions

Keep all original packaging materials and components for eventual return of the scale to avoid damage during transport; these are not covered by the warranty.

Disconnect all cables before transport and switch off the scale to avoid damage.

7.4. Disposal



Waste electrical equipment do not belong in household waste. Devices with this marking may not be disposed of as residual waste, but must be recycled.



Remove (if possible) all batteries and rechargeable batteries from the devices and send them to the battery disposal.



Make sure that only depleted batteries or batteries with insulated poles are disposed of so that there is no short circuit!

7.5. Warranty

ADE will repair or replace this product if it is proven that it failed within 1 year from the date of sale (proof of purchase is required) due to faulty workmanship or defective materials. All moving parts such as batteries, cables, power supply units etc. are not covered by the warranty. This warranty does not cover external normal wear and tear or damage caused by accident or misuse. Any warranty and damage replacement claims require the use of original accessories and spare parts of ADE. The warranty will not apply for devices that have been opened by unauthorised persons.

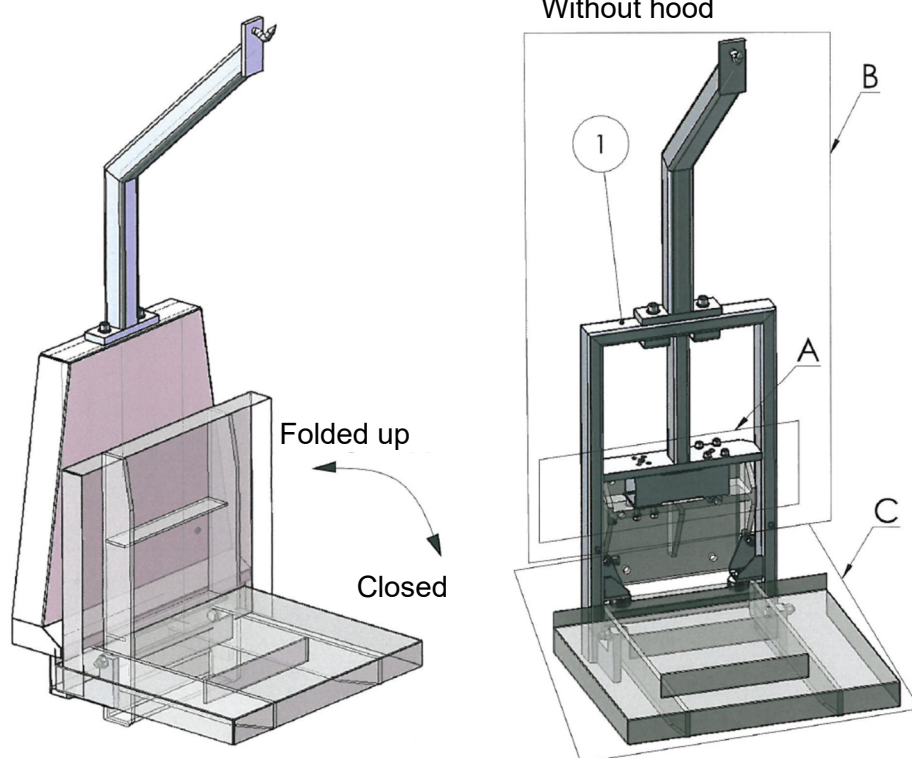
The statutory rights of the customer are not affected by this agreement in any way.

The dealers where the scale was purchased is responsible for complaints, after-sales service and spare parts.

8 Technical data

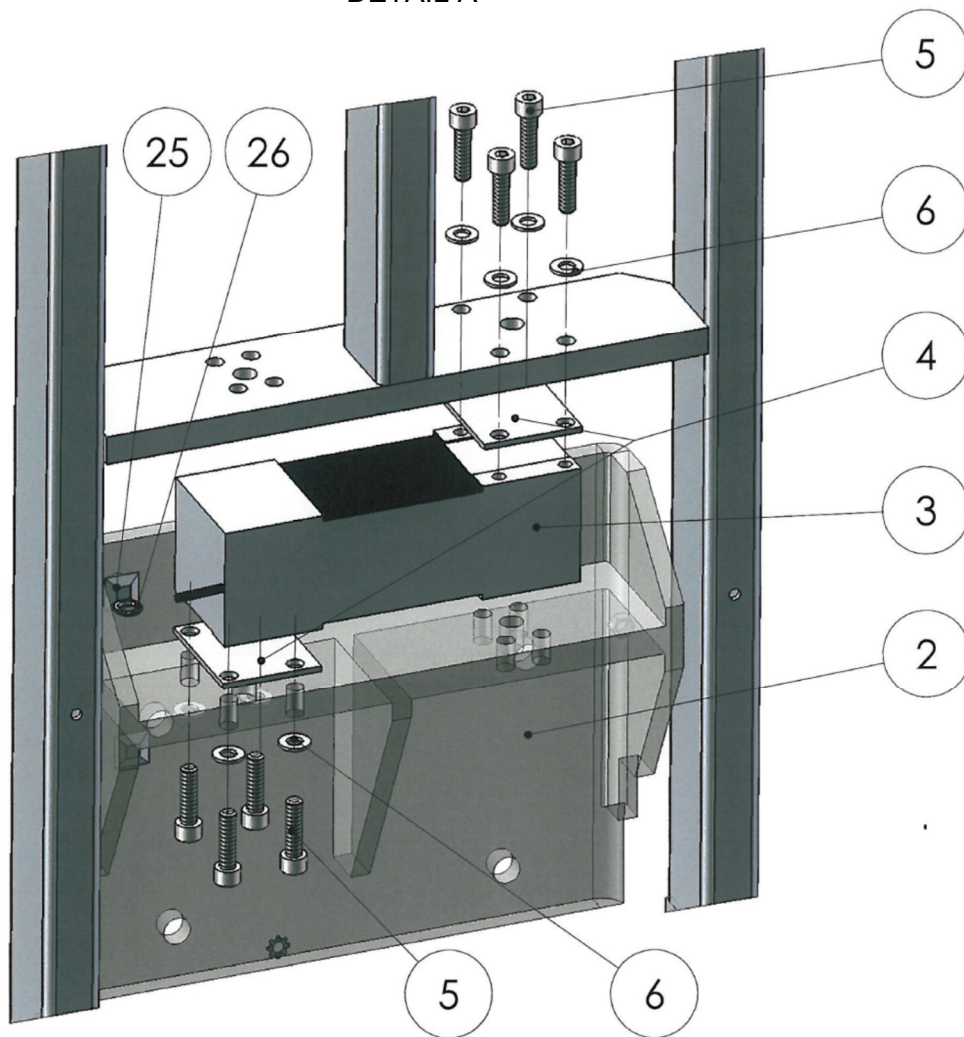
Power supply	According to specification for the display device
Measuring range	According to specification for the display device
Max. load capacity:	60 kg / 150 kg / 300 kg
Division:	20 g / 50 g / 100 g
Ambient conditions	
Operating temperature:	According to specification for the display device
Storage and transport temperature:	-20 °C ... +60 °C
Humidity:	10 – 95%, non-condensing
Air pressure:	800 hPa – 1060 hPa
Housing	
Dimensions:	545 x 580 x 705 mm
Weighing surface:	545 x 450 mm
Net weight:	78 kg
Material:	Stainless steel

9.1. Overview display

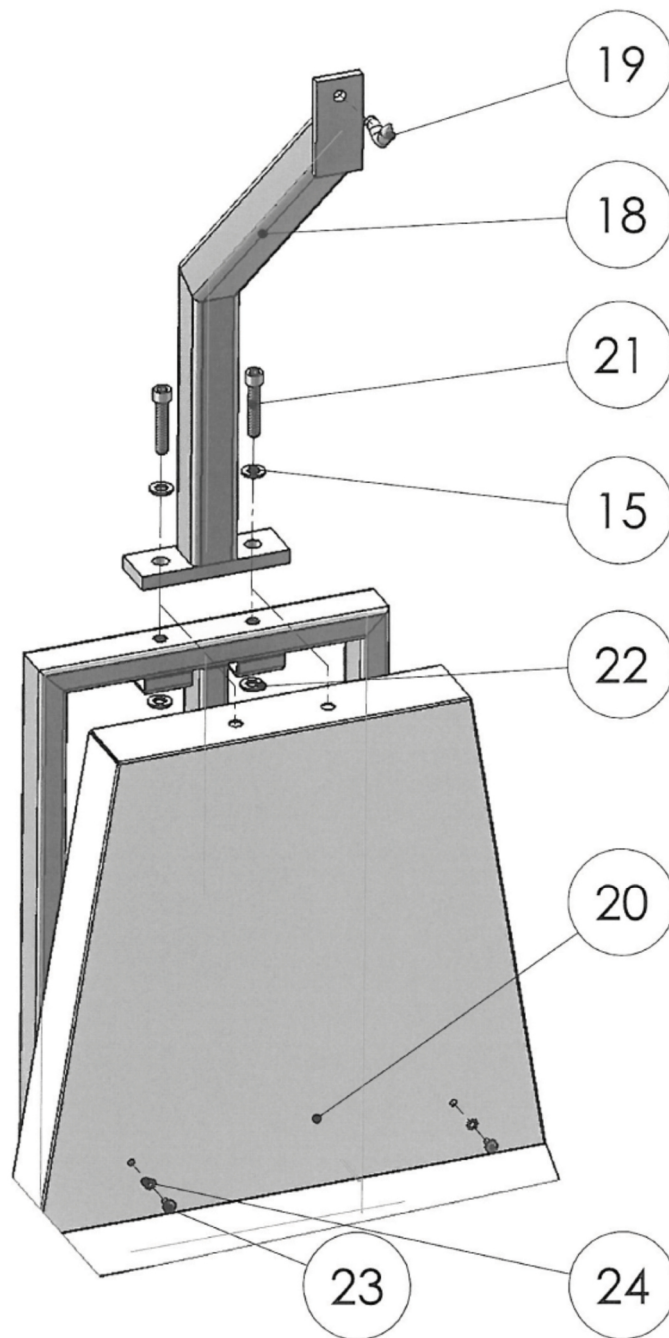


9.2. Exploded views

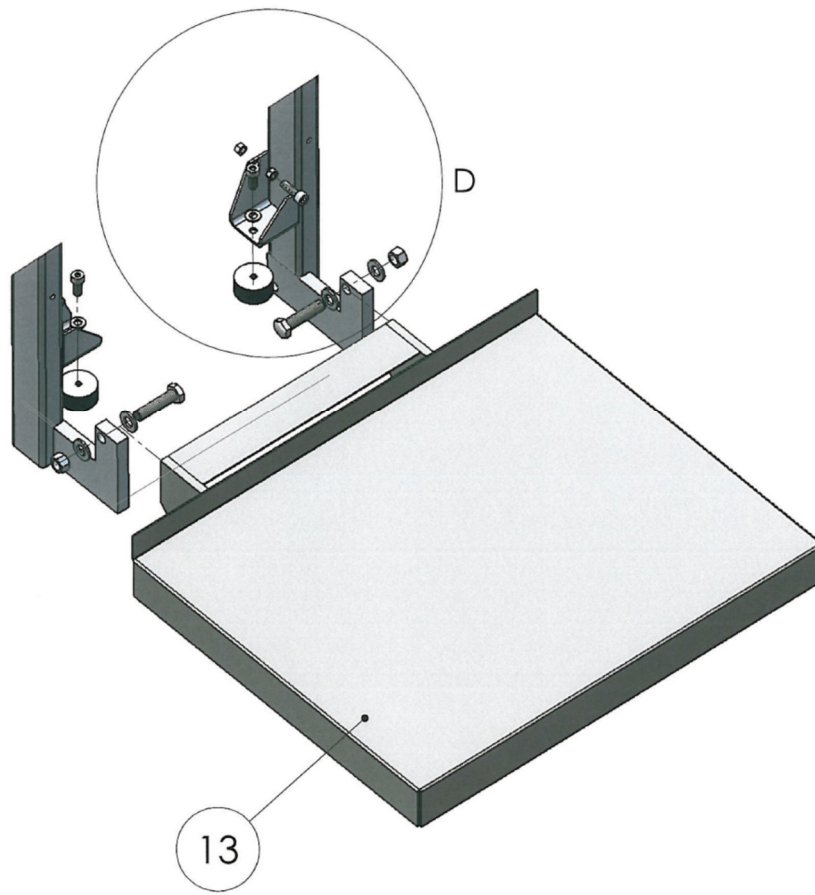
DETAIL A



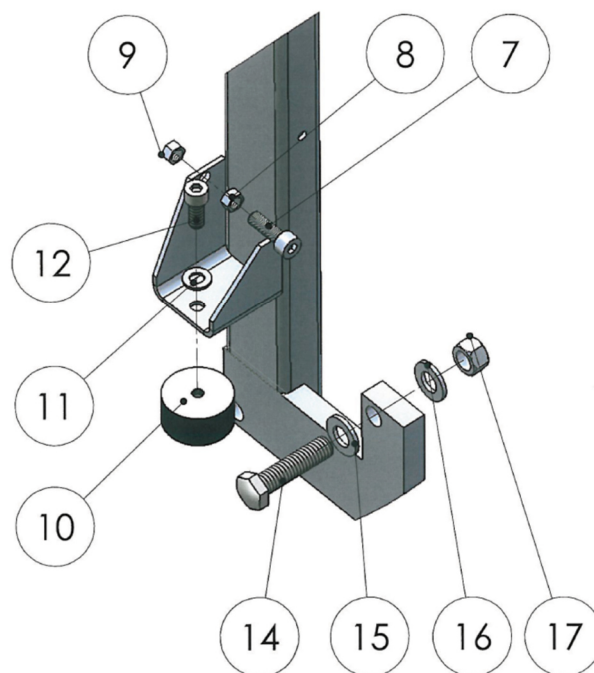
DETAIL B



DETAIL C



DETAIL D



9.3. Parts list

Pos.	Description	Quantity
1	Load frame, VZ	1
2	Wall bracket, VZ (Detail A)	1
3	Strain gauge load cell TYPE PC60	1
4	Spacer plate for load cell PW 16	2
5	Cylinder head screw M 8 x 30 mm	8
6	Washer M8, V2A, DIN 125	8
7	Cylinder head screw M8 x 25 mm, VZ, DIN 912	2
8	Nut M8, VZ, DIN 934	2
9	Flat nut, VZ, DIN 936	2
10	Elasto-buffer 40x20 E M8/1	2
11	Washer M8, VZ, DIN 125	2
12	Cylinder head screw M8 x 20 mm, VZ, DIN 912	2
13	Load plate, V2A, polished (Detail C)	1
14	Hexagon screw M12 x 50 mm, V2A, DIN 933	2
15	Washer M12, V2A, DIN 125	4
16	Spring washer M12, V2A, DIN 137	2
17	Stop nut M12, V2A	2
18	Cable holder	2
19	Cable tie 2.5 x 200	2
20	Cover hood, V2A polished (Detail B)	1
21	Cylinder head screw; 12 x 60 mm, V2A, DIN 6912	2
22	Spring washer M12, V2A, DIN 6796	2
23	Flat head screw with pressed washer M6 x 12 mm, V2A, DIN 7380	2
24	Overload protection, set screw M12 x 20 mm, VZ, DIN 913 (OPTIONAL)	2
25	Gallows, V2A	1
26	Hook; meat gallows and sausage gallows	1
	Accessories for attaching the scale (not listed on the drawing)	
27	Drilling template with assembly instructions, wall scale packaging	1
28	Nut M10, V2A, DIN 934	12
29	TOX-TRI dowel 12x71	4
30	Hanger bolt M10 x 160 mm, V2A, DIN 88149	4
31	Large diameter washer 10.5, V2A, DIN 9021	12

10 Declaration of Conformity



Declaration of conformity by the manufacturer

This product has been manufactured in accordance with the harmonised European standards. They conform to the regulations of the EC-directives listed below:

- EMC directive 2014/30/EU on electromagnetic compatibility
 - RoHS Directive 2011/65/EC
- in the currently valid versions.

This declaration will lose its validity if any modification is made to the scale without our consent.

Hamburg, March 2021

ADE Germany GmbH

Neuer Höltigbaum 15
22143 Hamburg

11 Contact information of the manufacturer

Manufacturer:

ADE Germany GmbH
Neuer Hoeltigbaum 15
22143 Hamburg / Germany
 +49 40 432 776-0
 +49 40 432 776-10
 info@ade-germany.de
 www.ade-germany.de

Distributor: