

# OPERATING INSTRUCTIONS



## Electronic wall scales



### Wall scale TerrexL

*TerrexL-230615-Rev002-UM-en*



## 1. Contents

1. Contents .....	2
2. Intended use.....	3
3. Safety instructions .....	3
4. Scope of Supply .....	4
5. Product overview .....	5
6. Mounting/installation .....	6
7. Installing and connecting the display unit.....	9
8. Starting up the weighing station .....	9
9. Cleaning and care .....	9
10. Technical Data.....	11
11. Declaration of Conformity .....	12
12. Exploded view/spare parts list .....	13
Exploded view .....	13
Spare parts list .....	14

## 2. Intended use



This symbol means: "Observe operating instructions." For accurate results, read these operating instructions carefully and observe the information contained therein. Keep these operating instructions handy for future reference.

Your ADE wall scale is a quality product. Never exceed the maximum weight (Max) indicated on the scale's nameplate. Always heed the instructions contained in this manual. The scale may only be used by qualified personnel. The scale may only be maintained by trained personnel.

The wall scale must be calibrated to be suitable for legal-for-trade applications. For this purpose, comply with the specifications in the operating manual for the supplied display unit.

The device must only be used for its intended purpose as specified in this manual. The manufacturer shall not be held liable for any damage to property and/or personal injury resulting from improper appliance use.

The manufacturer's warranty becomes invalid if any components other than the original parts supplied by the manufacturer are used.



**Any conversion of this appliance requires the prior written consent of the manufacturer.**

## 3. Safety instructions

It is essential that you read, understand, and follow all instructions in this manual and any other instructions pertaining to the wall scale and its components, as well as country-specific installation standards, applicable safety regulations, and accident prevention regulations.

- Exercise care when using the scale, and remember that it is a high-precision instrument!
- Ensure the wall on which the appliance is to be mounted is strong enough to support it!
- Make sure to use only the mounting material suitable for the respective wall on which the appliance will be mounted!
- Ensure no electricity, water, or other supply lines pass near the mounting holes!
- The scale may only be operated and maintained by authorized qualified personnel. Improper use may cause personal injury or damage to the wall scale!
- Before you start using the appliance, ensure that the power rating and current type specified on the nameplate of the connected display unit match the power rating and current type of your local grid!
- The cables must be laid so that they do not pose a tripping hazard!
- The cables must be laid so that they do not pose a risk of strangulation!
- Never operate the appliance outside the permissible ambient conditions!
- The scale must not be exposed to extreme temperatures caused by adjacent equipment or sunlight!
- Always ensure constant ambient temperatures when using the scale, and avoid using it in a draft, as the measurement results may otherwise be inaccurate!
- The scale should be placed as far away as possible from other equipment or sources of electromagnetic or other interference (e.g., powerful motors and portable and mobile RF communications equipment), as these can affect the measurement results!

- Make sure to use only approved accessories and peripheral devices!
- Always unplug the appliance from the power outlet before cleaning it!
- Never immerse the appliance in water or any other liquids!
- If you have any problems during the installation, operation, or maintenance of the appliance, contact the authorized service center. Never attempt to open or repair the appliance single-handedly!

Be sure to report any unexpected operations or events to the authorized service center.

DO NOT use the scale:

- when the power adapter is damaged,
- when the power adapter does not work,
- when the battery compartment is warped,
- after extended storage in a humid environment!

If any of these occurs, contact the authorized service center.

Always comply with the safety instructions in the operating manual for the display unit!

#### 4. Scope of Supply

Be sure to check the package contents for completeness upon receipt of the scale. Carefully remove the scale and accessories from the package and discard all packing materials.

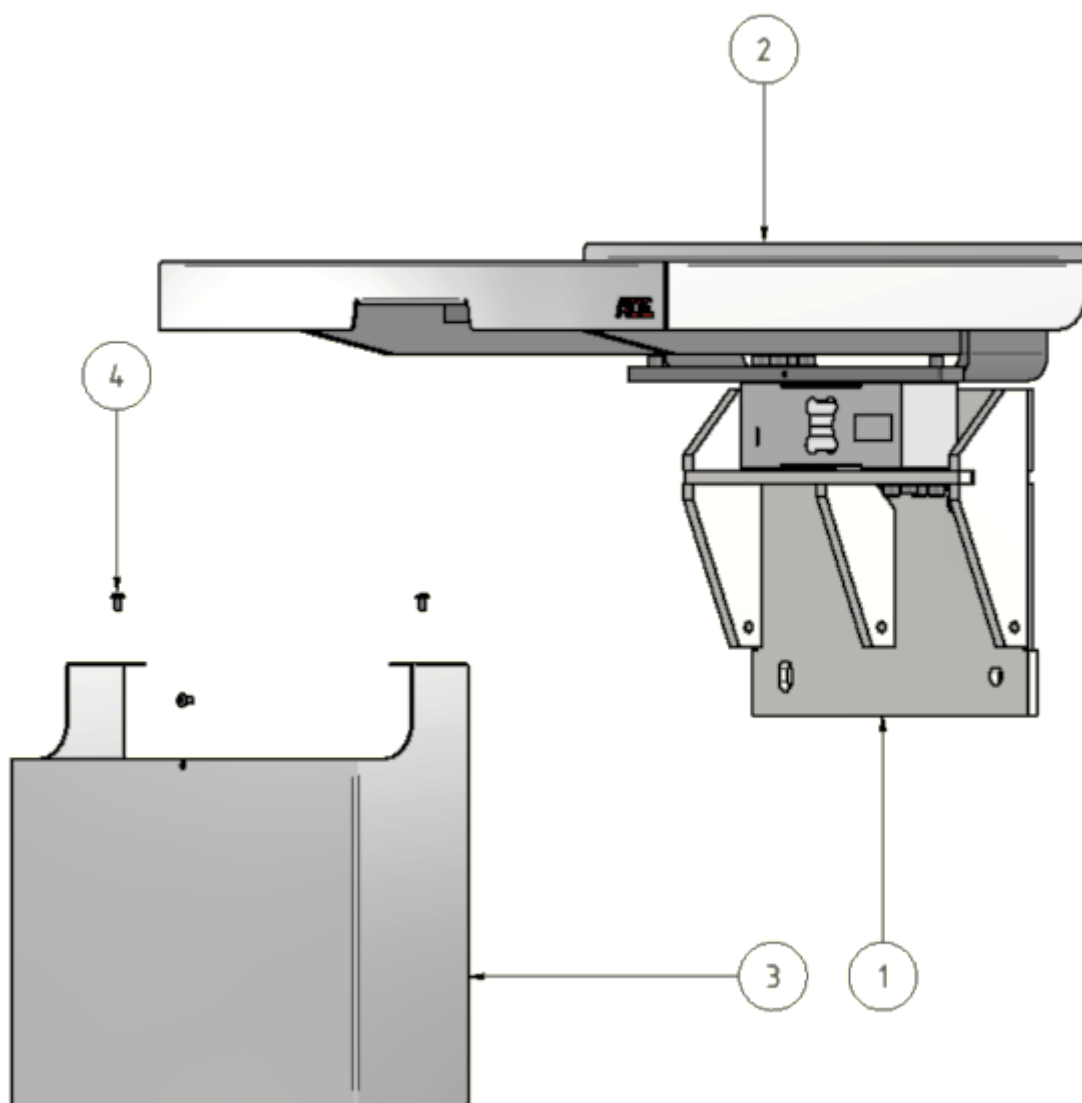
The package contains the following items:

- Wall scale
- Mounting material
- Drill template
- Operating instructions for the wall scale
- Display unit
- Operating manual for the display unit
- Additional accessories, if any (if listed in the operating instructions for display purposes)
- Declaration of conformity based on the serial number (for calibrated scales only)



**The display unit is permanently connected to the scale with a connection cable. Ensure the cable is not overly kinked or pinched, or it will be damaged.**

## 5. Product overview



*Figure 1: Overview*

- 1 Wall bracket
- 2 Bearing plate with support frame
- 3 Cover
- 4 Fastening screws

## 6. Mounting/installation



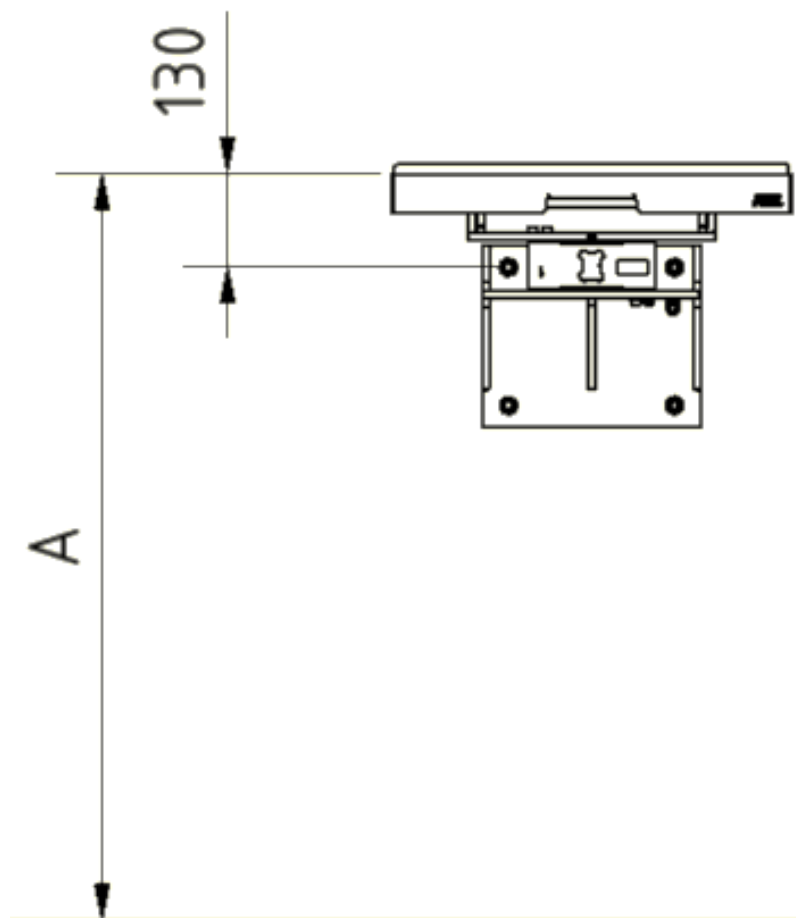
**Ensure the wall on which the appliance is to be mounted is strong enough to support it!**

**Make sure to use only the mounting material suitable for the respective wall on which the appliance will be mounted!**

**Ensure no electricity, water, or other supply lines pass near the mounting holes.**

**Special precautions concerning EMC must be taken when installing and operating electrical equipment in compliance with these operating instructions!**

1. Remove the mounting material and drill template from the package.
2. Determine the position of the scale and ensure the wall is strong enough to support it. The manufacturer assumes no liability for the bearing capacity of the wall mounting. Only a qualified building expert can determine whether the wall is suitable for the intended mounting type. The supplied mounting kit is approved for standard concrete C20/25 to C50/60 (cracked and uncracked concrete, seismic class C1 and C2).



*Figure 2: Positioning for desired mounting height*

3. The mounting height (A) is the distance between the bearing plate and the finished floor (Figure 2). It can be tailored to the customer's needs. A mounting height (A) between 900 mm and 1000 mm is recommended for many applications.
4. Use the drawing (Figure 3) or the supplied drill template to mark the drill holes.

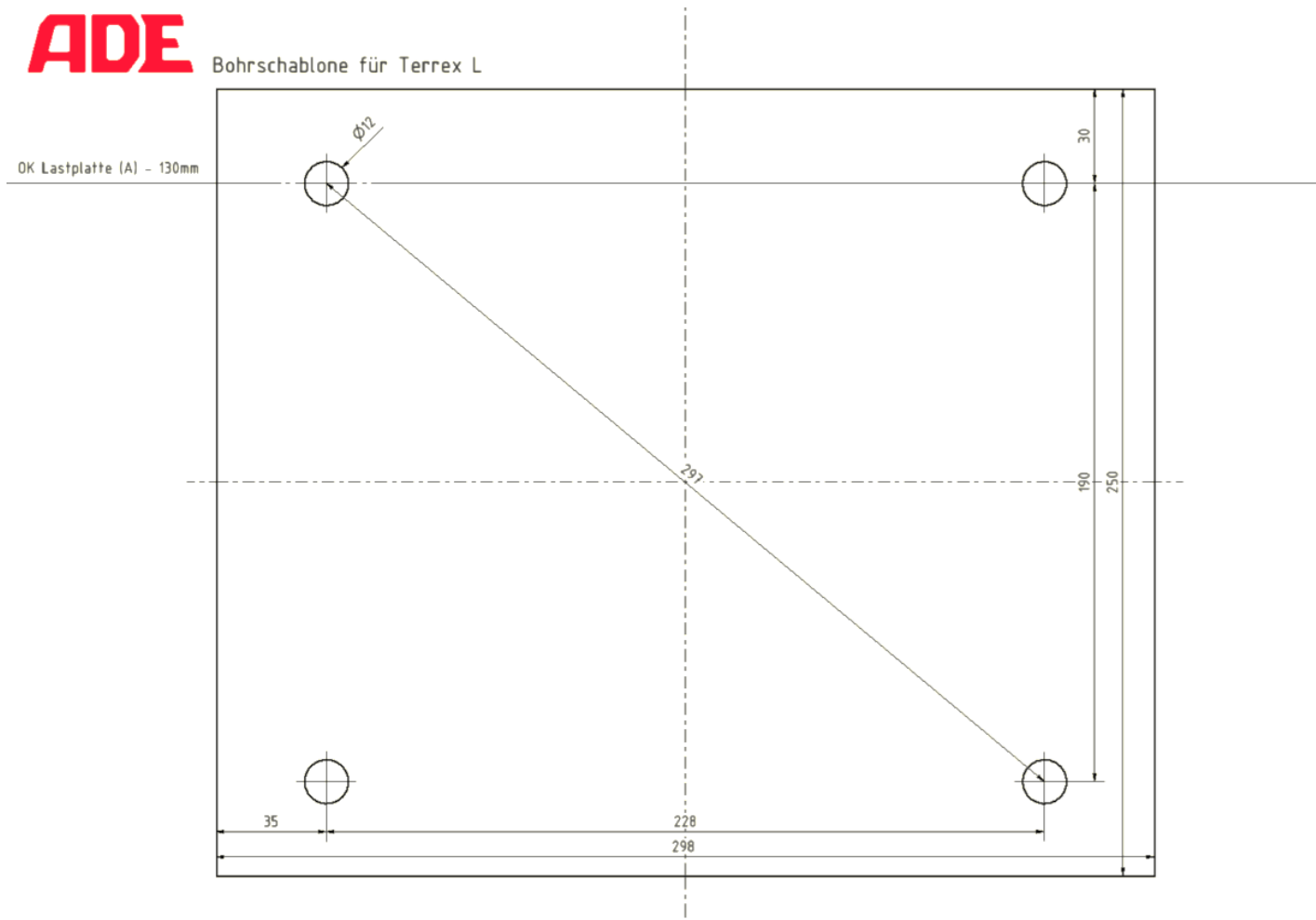


Figure 3: Dimensional drawing for wall mounting

5. Drill holes 12 mm in diameter and up to 70 mm in depth, perpendicular to the mounting plane, and then carefully remove all debris from the holes.

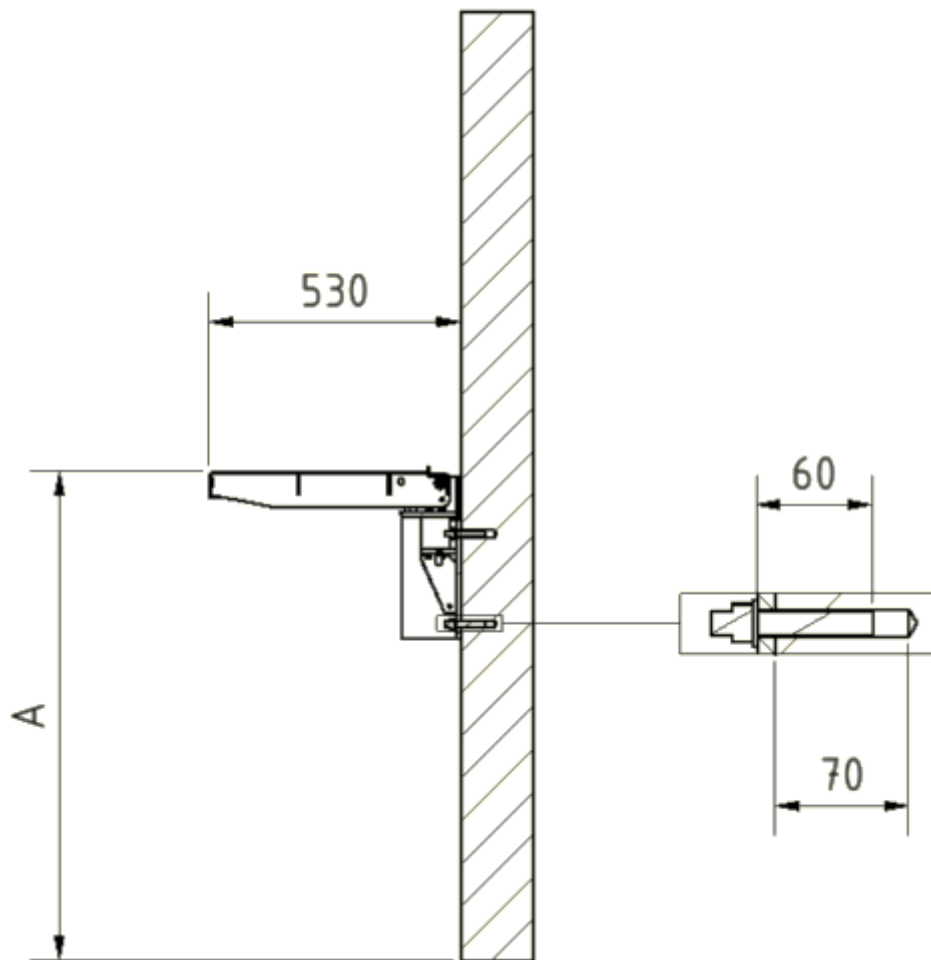


Figure 4: Drill hole for wall anchor

6. Drive the anchors about 50 mm deep into the holes. The setting depth marks must be in the concrete.
7. Unscrew the nuts and washers from the anchors.
8. Unscrew the cover from the scale. Mount the wall scale on the anchors and secure it with nuts (washers).
9. Use a spirit level to align the scale correctly. Align the scale horizontally using the slotted holes and vertically using shims provided by the customer, if necessary. Use a torque wrench to tighten the four nuts to a maximum of 60 Nm.



**Never adjust the overload stops secured with red sealing wax! This can produce inaccurate measurement results and cause the measuring cell to be overloaded (or even permanently damaged).**

10. Mount the cover.



## 7. Installing and connecting the display unit

For this purpose, comply with the specifications in the operating manual for the display unit.

## 8. Starting up the weighing station

With the wall scale and display unit correctly installed and connected, the wall scale can be used as intended.

For weighing, fold down the bearing plate (Figure 1, no. 3) and pull the indexing plunger (Figure 1, no. 6). Then place the item to be weighed on the scale.

Always follow the instructions in the operating manual for the display unit that shows the weight of the items being weighed.

After weighing, you should bring the bearing plate back to the upright position. Check that the indexing plunger secures the bearing plate and thus prevents it from folding down unintentionally.

## 9. Cleaning and care

### Cleaning



**Unplug the appliance from the power supply before cleaning!**

**Make sure that no liquid gets inside the appliance!**

**For this purpose, always comply with the specifications in the operating manual for the display unit!**

Use a soft, slightly damp cloth to clean the cover of the wall scale if necessary.

Only use detergents that are suitable and approved for cleaning all parts. Only use products with a pH value of 7-8 for cleaning. Never use concentrated acids, alkalis, solvents, or pure alcohol for cleaning.

### Faults and error messages

For this purpose, comply with the specifications in the operating manual for the display unit.

### Storage and transportation conditions

Keep all original packing materials and components for the possible return of the scale to avoid transport-related damage. This type of damage is not covered by the warranty.

Before transporting the scale, disconnect all cables and switch off the scale to avoid damage.

## **Disposal**



Waste electrical and electronic equipment must not be disposed of in household waste. Equipment with this marking must not be disposed of in residual waste and must be recycled.



Remove all (rechargeable) batteries, if any, from the appliance and dispose of them properly.



Before disposing of batteries, ensure they are dead or have insulated terminals to avoid short-circuiting!

## **Warranty**

If the product is proven to have failed within 1 year from the date of purchase (receipt required) due to defects in material and workmanship, the manufacturer will repair or replace the product. The warranty does not cover moving parts such as batteries, cables, power adapters, etc. This warranty does not extend to external normal wear and tear or damage caused by accident or improper use. Any warranty and damage claims may only be asserted if the manufacturer's original accessories and spare parts are used. This warranty does not cover the products tampered with by unauthorized personnel.

The warranty agreement shall not affect the customer's statutory rights.

Complaints shall be addressed to the dealer from whom the scale and spare parts have been purchased or who provides the after-sales service.

## 10. Technical Data

<b>Power supply</b>	According to the display unit specifications	
<b>Measuring range</b>	TerrexL-60	TerrexL-150
Max. bearing capacity:	60 kg	150 kg
Increment:	20 g	50 g
<b>Ambient conditions</b>		
Operating temperature:	According to the display unit specifications	
Storage and transport temperature:	-20 °C to +60 °C	
Relative humidity:	10 – 95%, non-condensing	
Air pressure:	800 – 1060 hPa	
<b>Housing</b>		
Dimensions:	550 x 810 x 130 mm (W x H x D, folded up) 550 x 365 x 530 mm (W x H x D, folded down)	
Weighing surface:	550 x 455 mm (W x D)	
Net weight:	30 kg	
Material:	Galvanized steel / stainless steel	

## 11. Declaration of Conformity



### Manufacturer's declaration of conformity

This product was manufactured according to the harmonized European standards. It complies with the provisions of the EC directives listed below:

- EMC Directive 2014/30/EU
  - RoHS Directive 2011/65/EU
- in their current version.

This declaration becomes invalid if the scale is converted in a way that has not been approved by us.

Hamburg, January 2023

#### **ADE Germany GmbH**

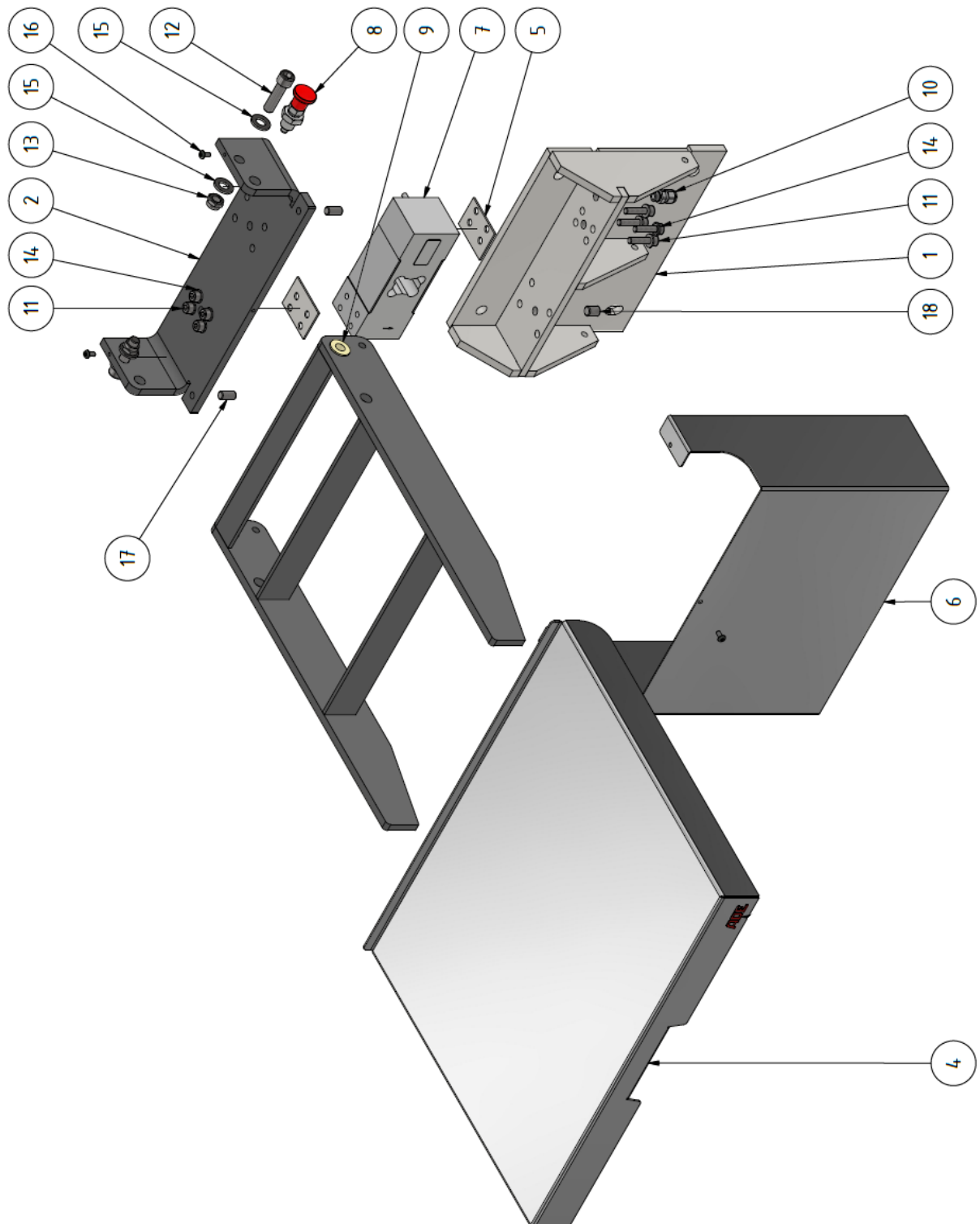
Neuer Höltigbaum 15  
22143 Hamburg / Germany

#### **Manufacturer:**

ADE Germany GmbH  
Neuer Höltigbaum 15  
22143 Hamburg / Germany  
 +49 40 432 776 - 0  
 +49 40 432 776 - 10  
 [info@ade-germany.de](mailto:info@ade-germany.de)  
 [www.ade-germany.de](http://www.ade-germany.de)

## 12. Exploded view / Spare parts list

### Exploded view



**Spare parts list**

No.	Designation		Article number
7	Load cell 300 kg	For TerrexN-150	WAE50368
	Load cell 500 kg	For TerrexN-300	WAE62620
8	Stainless steel indexing plunger with rest position		MONT62260
10	Cable gland M12 x 1.5		MONT62476



<b>Distributor:</b>